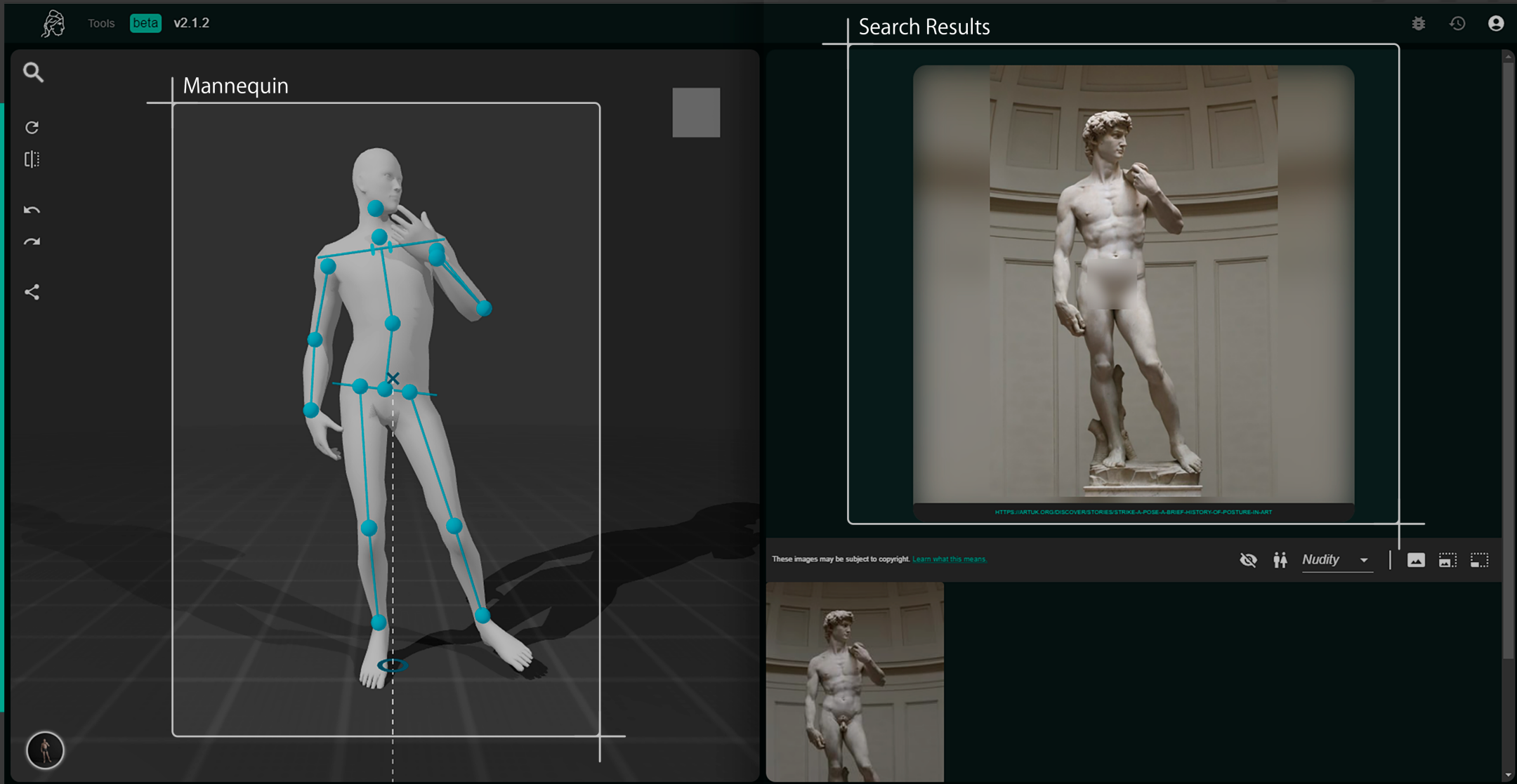


YOUR WORKSPACE

PoseSearch User's Guide

Apollite PoseSearch Beta v2.1.2



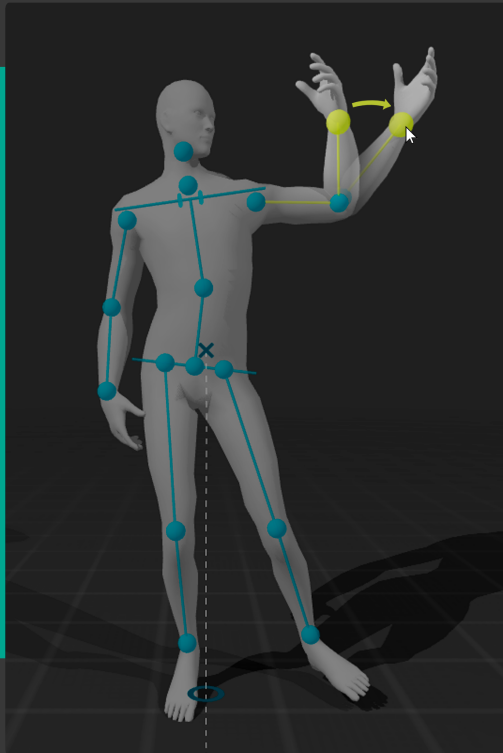
The posable mannequin is located in the left side compartment of your screen. By posing this mannequin you can search for similar poses on the internet.

The right hand side of the screen contains search results as well as options that can help you refine your searches to find exactly the pose you are looking for

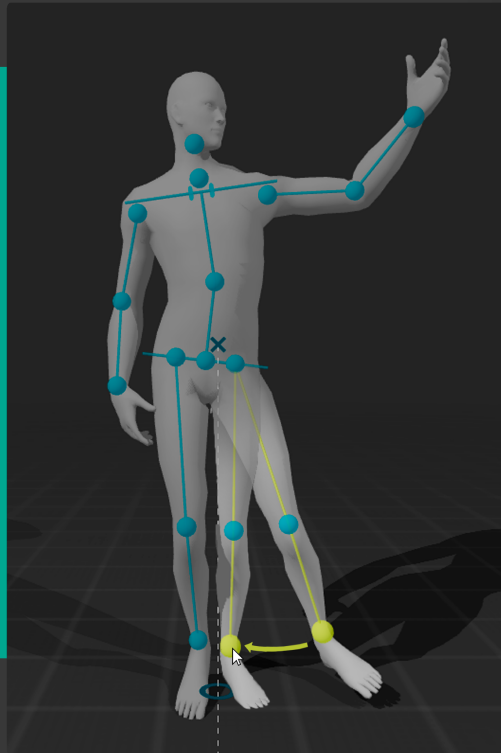
POSING THE MANNEQUIN

PoseSearch User's Guide

Apollite PoseSearch Beta v2.1.2



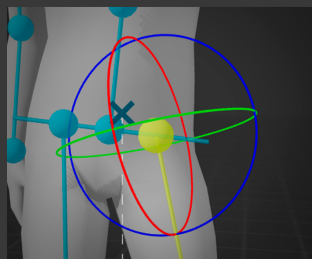
Left hand rotation



Left leg rotation

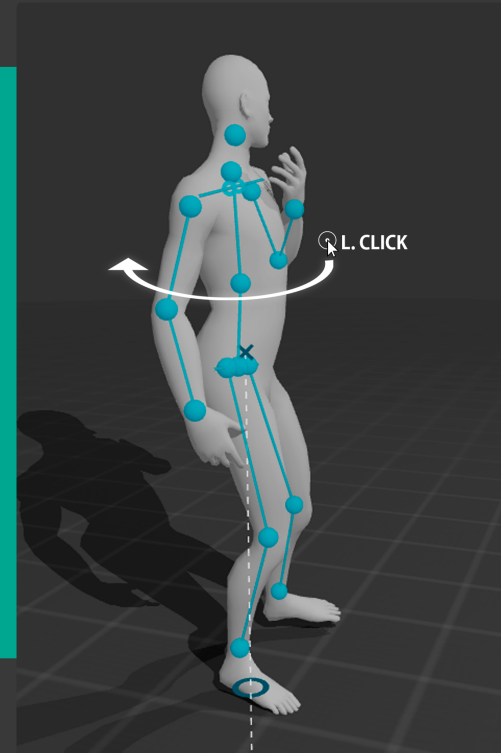
Mannequin joints are indicated by selectable **cyan** spheres. Left clicking the joint will select it and turn it **yellow**. Please note that the bones impacted by your selection are also indicated when selecting a joint.

Selected joints can be posed by left clicking the joint and dragging your mouse cursor. Adjust the joints on the mannequin until you achieve the desired pose.

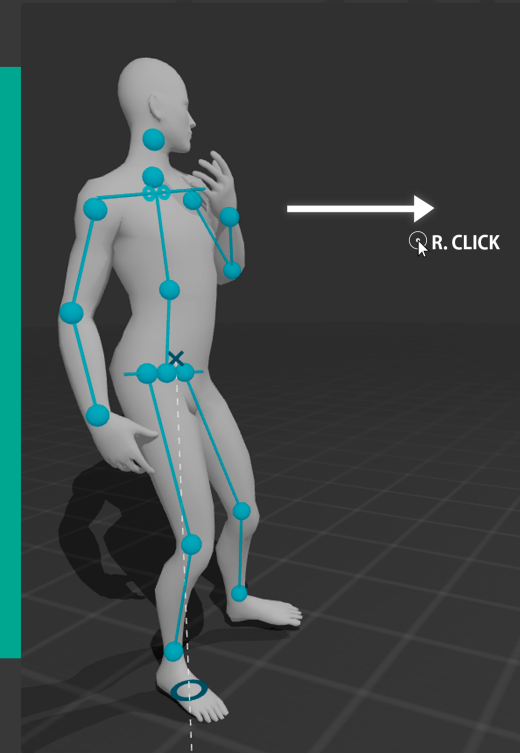


Complex joints, such as the hip joints, have a sphere widget attached to them. This widget can help you adjust these joints more precisely and will automatically pop up when the right joint is selected.

Green, Red and Blue are indicative of X,Y,Z axis rotations. Left click and drag your cursor to adjust the joint around the selected axis.



Rotating the camera



Panning the camera

Rotating and panning the camera will help you consider the pose from different angles. **Left Click** the negative space in the workspace and drag your mouse cursor to rotate the camera view. **Right Clicking** and dragging the mouse in the same manner will pan your camera view instead.

— USING POSE PRESETS

The **Pose Preset** menu is located in the bottom left corner of your workspace. Clicking it will bring up a library of presets that you can use as starting points for your own poses or as search prompts.

Experiment with different presets and how you can adjust them to get the most accurate results possible.



OPTIONS AND SEARCH

PoseSearch User's Guide



Search Button



Reset Mannequin



Mirror Pose



Undo



Redo



Share

Creates a sharable URL that links to your created pose. Use this button to share your work with other people.

In the upper left corner of your workspace you can find extra posing options as well as the search button. Use this section to undo any changes you've made to the pose as well as reset the mannequin.

Like/Dislike Buttons



Download



Mirroring Match Score



These images may be subject to copyright. [Learn what this means.](#)



Nudity



Blur Nudity

Choose Sex

Toggle Clothed Models

Image Size Preference

The right hand side of your screen contains extra search options that can help you refine your results. Here you can toggle nudity as well as select the image results size.